



ÖSTERSJÖSTIFTELSEN

THE FOUNDATION FOR BALTIC AND EAST EUROPEAN STUDIES

# Information meeting – calls for proposals in 2026

Östersjöstiftelsen – The Foundation for  
Baltic and East European Studies



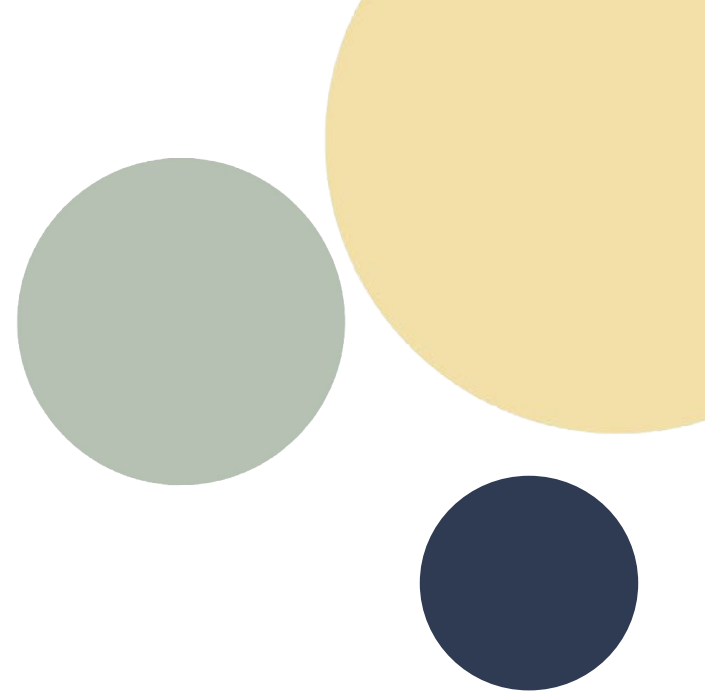
# Welcome to the information meeting!

- Please mute your microphone.
- After the presentation there will be time for questions.
- We will not answer the questions directly in the chat.
- The meeting is not recorded.
- The presentation will be available at our website.
- Please note, this presentation is only an additional material to the instructions for application.



# Programme

- Presentation from Östersjöstiftelsen
  - Forms of support
  - Assessment process
  - Tips along the way
- Presentation from Södertörn University
- Time for questions





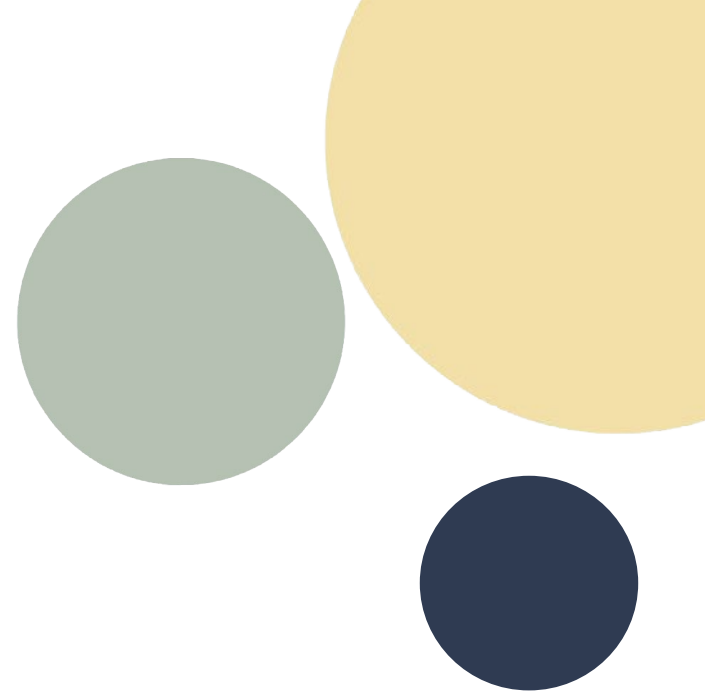
# Who are we?

- Founded in 1994 by the Swedish Government
- Supports research related to the Baltic Sea Region and Eastern Europe at Södertörn University
- Support for all disciplines



# Recurring calls for proposals

- Two- and three-year projects – annually
- Postdoctoral projects – annually
- Smaller grants – twice a year:
  - research networks
  - conference grants
  - publication grants
- Grand projects – every second year, *next in 2027*





# Grant administrator

**Södertörn University** must be grant administrator for:

- Two- and three-year projects
- Postdoc projects
- Conference grants

**HEI in Sweden** may be grant administrator for:

- Research networks (network must include a researcher at Södertörn University)
- Publication grants (please note the conditions for publication grants)



# Grant administrator

- At the date of application – no requirement for employment at Södertörn University
- During the project period – project manager must be employed at Södertörn University
- See [Södertörn University's checklist](#) with internal procedures



# Two- or three-year projects

Support for a well-defined research project within a limited period, applicants themselves formulate the research problem and decide on the method and implementation

- Applicant: Individual researcher or a smaller group of researchers
  - All participating researchers must have obtained a PhD
- Grant administrator: Södertörn University
- Period: 2-3 years
- Grant amount: Maximum of SEK 6 million.
- Start: January 2027



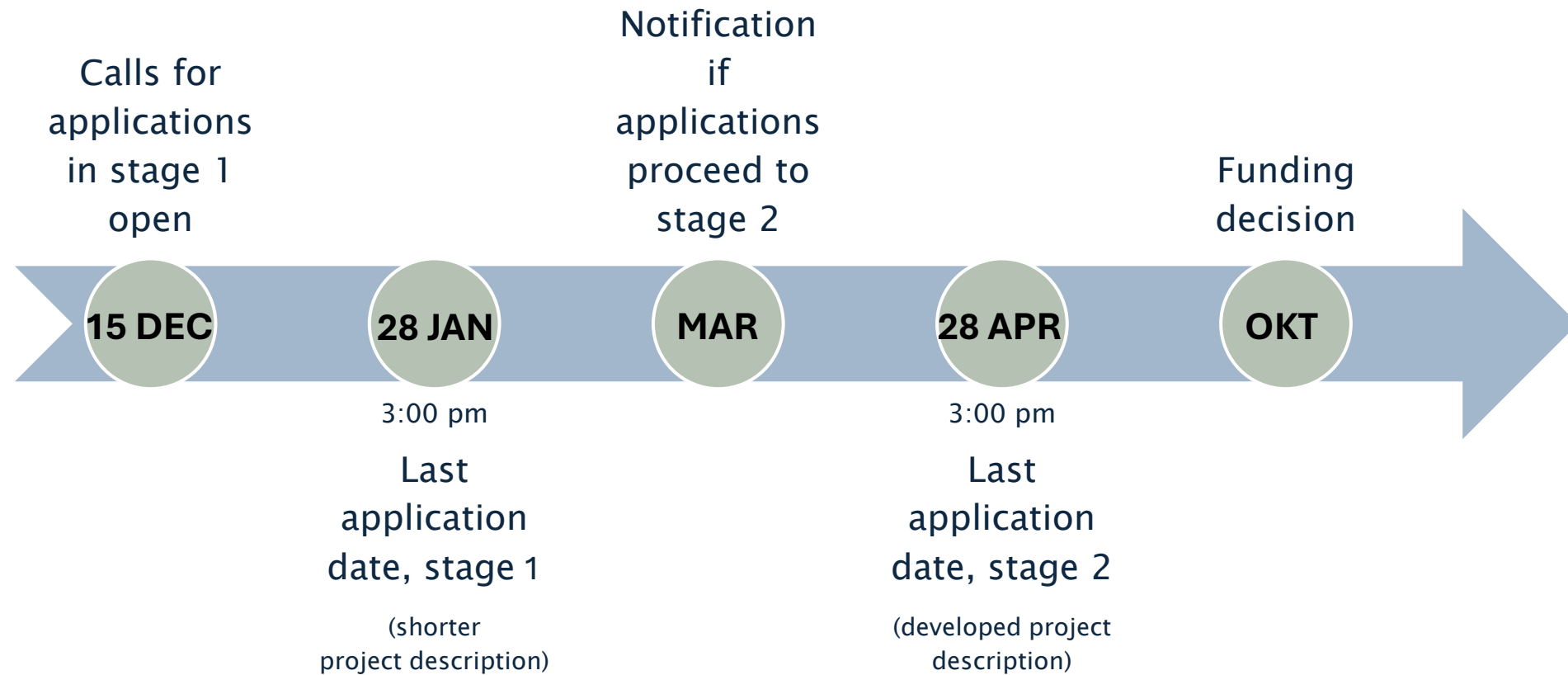
# Postdoc projects

Support to conduct a well-defined research task within a limited period.

- Applicant:
  - A researcher up to three years after obtaining doctorate
  - a PhD-student due to obtain the doctorate before 2027.
- Grant administrator: Södertörn University
- Period: 2 years
- Grant amount: Salary funding may cover 80–100% FTE
- Start: January 2027



# Key dates: two- and three-year projects and postdoc projects





# Grand projects

*No call in 2026; next call in 2027.*

*Encourage to apply for research networks in order to prepare application to the 2027 call for proposals.*

- Applicant: A group of at least four researchers
  - Funding may be applied for PhD students and postdocs.
- Grant administrator: Södertörn University
- Period: 4-5 years
- Grant amount: maximum 25 million SEK
- Next call in 2027, with grant start in: January 2028



# Research networks

Creating new networks of researchers or maintaining already established ones, research initiation or contribution to future research through academic meetings and contacts that lead to applications for research funding.

- Applicant: A group of researchers, including at least one member from Södertörn University
- Grant administrator: a Swedish HEI
- Grant amount: maximum 250 000 SEK
- Period: 1 year
- Start: July 2026, January 2027



# Conference grants

Support to arrange a conference with clear relevance to the Baltic Sea Region and Eastern Europe.

- Applicant: An individual researcher.
  - At least one person in the organizing committee must be employed at Södertörn University.
- Grant administrator: Södertörn University
- Grant amount: maximum 250 000 SEK
- Period: 1 year
- Start: July 2026, January 2027



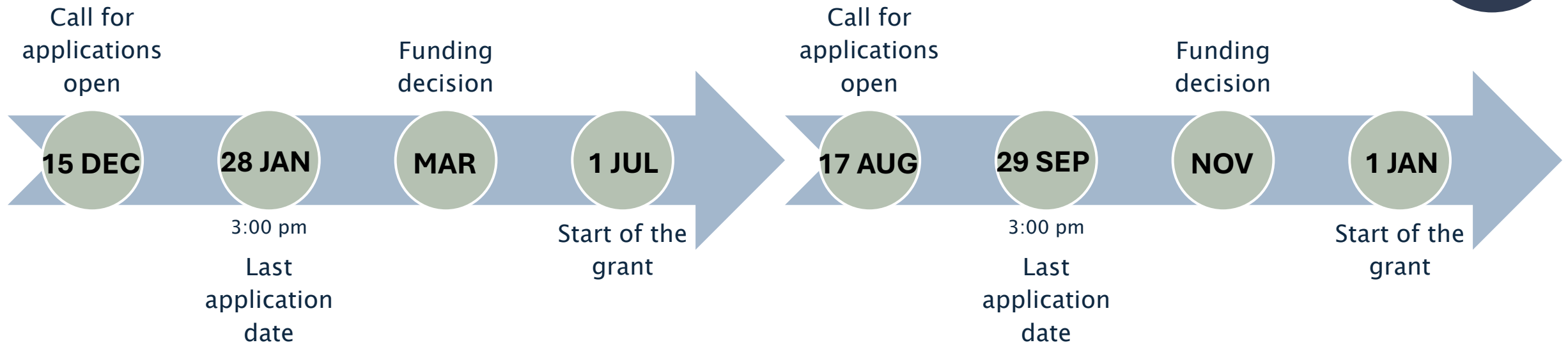
# Publication grants

Support for publishing research results from funded research project or conference grant, in both cases with funding from the Foundation

- Applicant: A researcher with a grant from the Foundation, during grant availability period and up to three years after submitting the final report
- Grant administrator: a Swedish higher education institution
- Grant amount: maximum 250 000 SEK
- Period: 1 year
- Start: July 2026, January 2027



# Key dates: smaller grants research networks, conference and publication grants





# Which grants may be applied for simultaneously?

- Only one application for two- or three year project or postdoc per call
- Several applications for smaller grants (research networks, conference and publication grants)



# What applies if a researcher has an ongoing project?

- **Project manager** for ongoing project (until final report is submitted) – may apply only as participant
- **Participant** in an ongoing project – may apply as project manager or participant
- **Parallel projects:** up to 100% FTE in parallel projects
- Ongoing smaller grant – no restrictions
- See [tables on the website](#)



# Baltic Sea Programme (Östersjöprogrammet)

- Professors and associate senior lecturers may apply.
- No salary funding.





# Budget

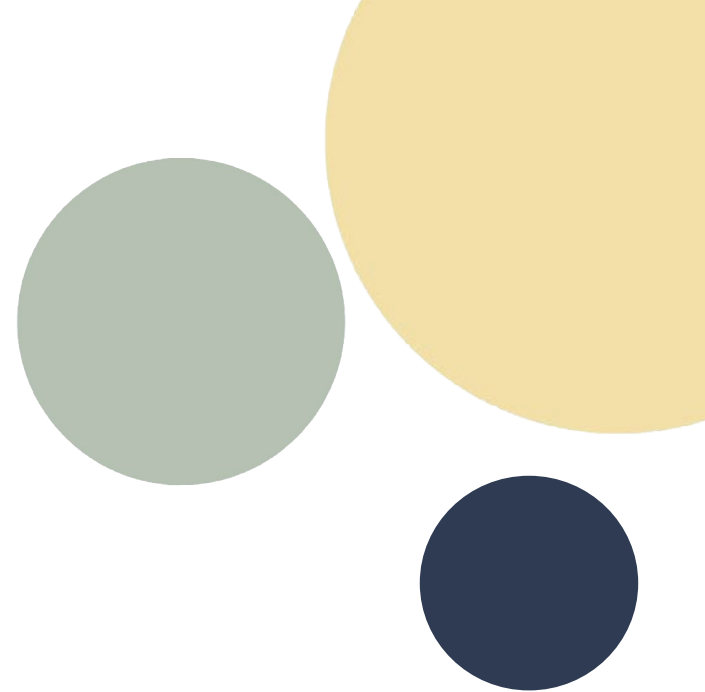
All the costs must be specified and motivated in the budget commentary.

- Salaries
  - Up to 100% FTE
  - Project manager must have a min. 20% FTE in the project
- Social security contributions (LKP, lönekostnadspålägg)
  - Payroll overhead
- Overhead costs



# Budget

- Costs of premises
- Investigation costs
- Costs for conferences and travel
- Other costs
  - Non-research staff
- Dissemination of project results – flat rate





# Budget – smaller grants

- **No** salary funding
- **Research networks and conference grants:**
  - Costs of premises
  - Travel costs
  - Other costs
  - Overhead costs (according to grant administrator's practices)
- **Publication grants:** publication costs and overhead costs



# Co-funding with other research funders

- Projects and postdocs - normally **not** allowed
- Smaller grants – allowed





# Signing the application

## Projects and postdocs:

- In stage 1: secure approval from Södertörn University
- In stage 2: signature from Head of School before submission

## Smaller grants:

- signature from Head of School before submission

## Signature:

- with Swedish BankID in the application system or
- a signature form



# Assessment process

## Projects and postdocs

**Stage 1** Applicants send in a short version of the project

### **Research committee:**

- Assesses applications
- Selects applications for stage 2
- No individual feedback in stage 1



# Assessment process

## Projects and postdocs

**Stage 2** Applicants send in a developed application

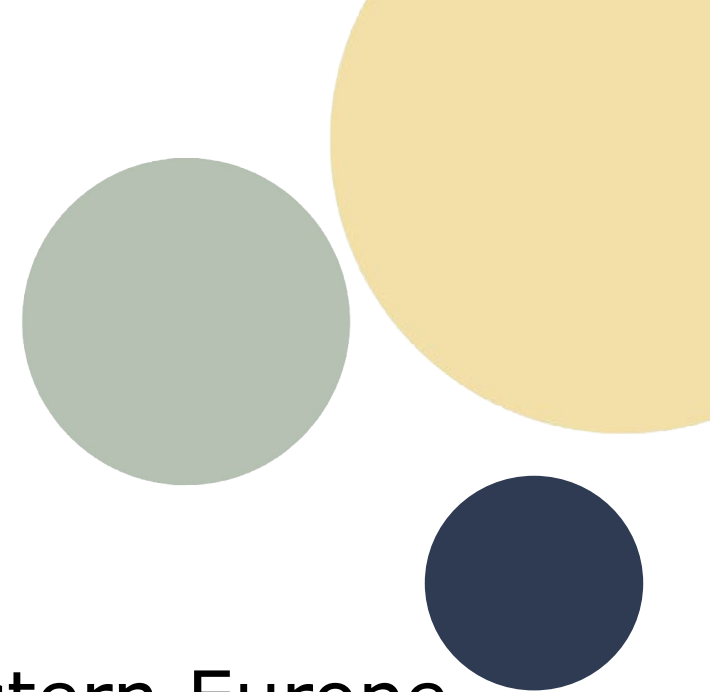
- **Research committee:**
- Selects external experts
- Assesses applications and reviews the external experts' assessments
- Prioritises applications and makes a recommendation to the Board
- The Board decides on funding
- The applicants receive external experts' assessments



# Assessment criteria

## Projects and postdocs

- scientific/scholarly quality
- relevance to the Baltic Sea Region and Eastern Europe
- relevance to society

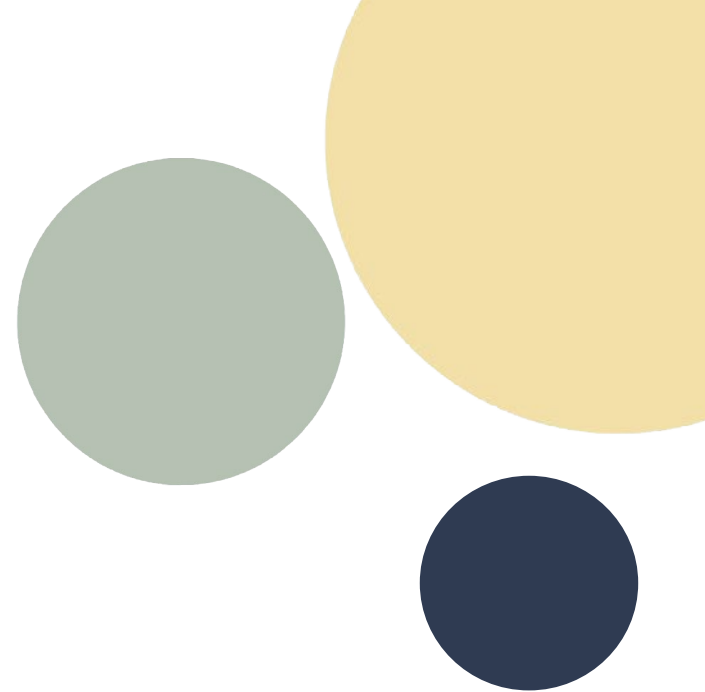




# Assessment criteria smaller grants

## **Research networks:**

- scientific/scholarly potential
- relevance to the Baltic Sea Region and Eastern Europe
- network composition
- quality of planned activities
- how the research network will benefit research and/or doctoral studies at Södertörn University
- relevance to society





# Assessment criteria

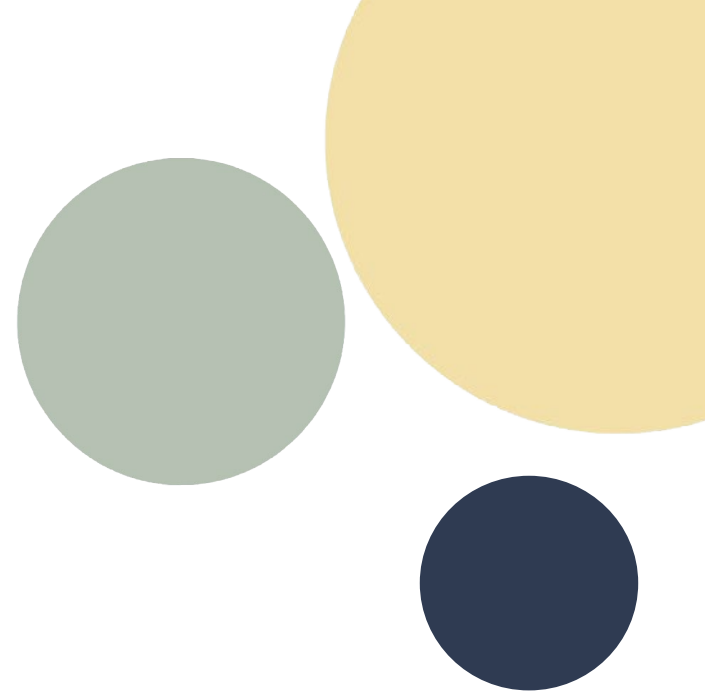
## Smaller grants

### **Conference grants:**

- scientific/scholarly quality
- relevance to the Baltic Sea Region and Eastern Europe
- relevance to society

### **Publication grants:**

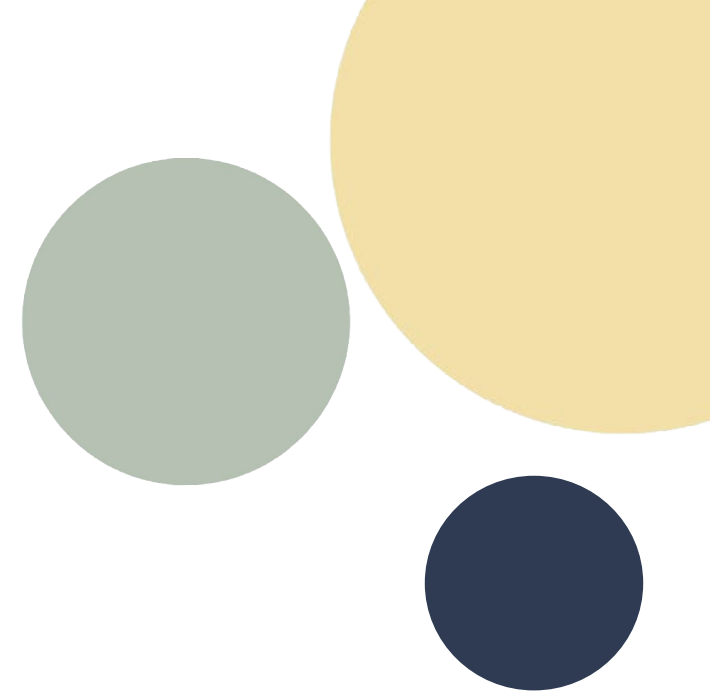
- relevance to the Baltic Sea Region and Eastern Europe
- relevance to society





# Geographical area

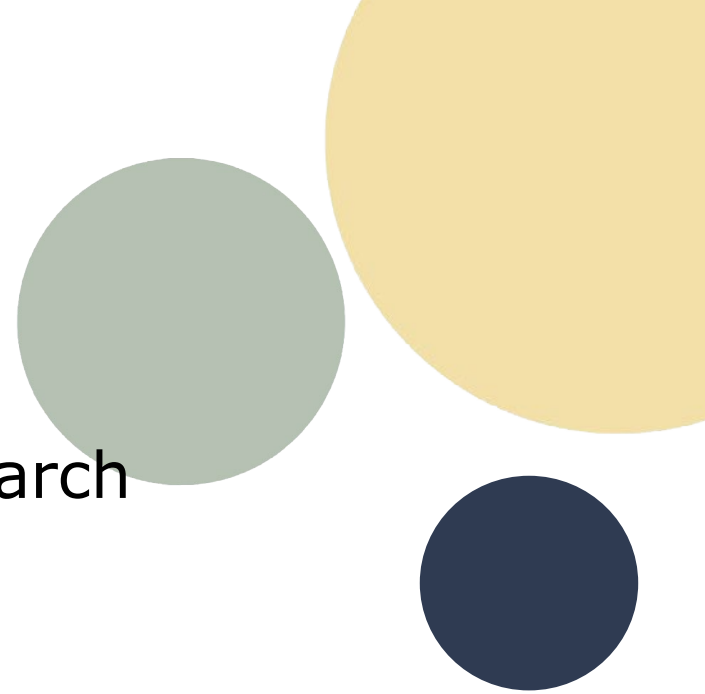
- The research must have relevance to **the Baltic Sea Region and Eastern Europe**
- The 'Baltic Sea Region' is the Baltic Sea itself and the surrounding countries. The 'Eastern Europe' part comprises post-communist Central, South and East Europe.
- *A list of countries is provided on the website.*





# Some tips along the way

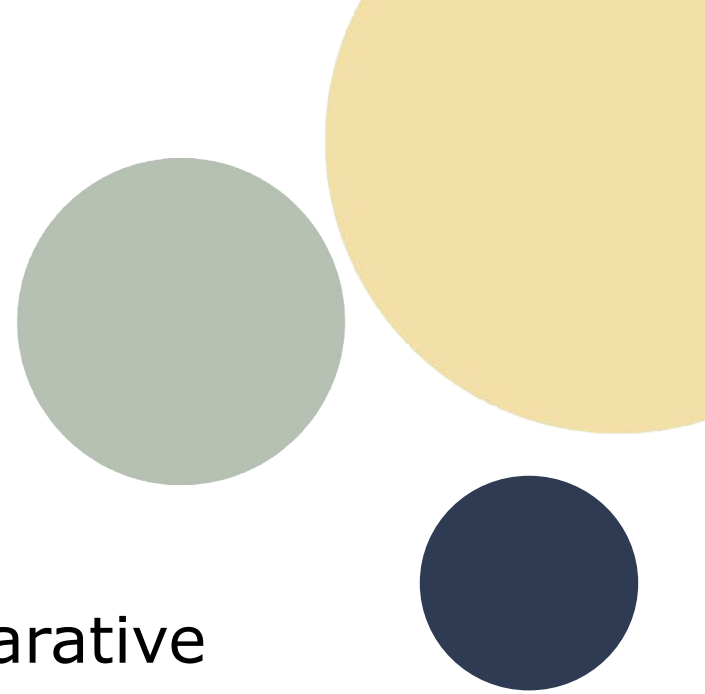
- Clearly define the project aim and formulate research questions
- Choose competence that is needed to address the research question
- Write for a panel with broad competence
- Clearly articulate and motivate:
  - relevance to the Baltic Sea Region and Eastern Europe
  - relevance to society from the project





# Some tips along the way

- In case of comparative studies, justify the choice of case studies clearly.
- Countries outside the region are allowed in comparative studies
- Clearly present and specify design, material, data collection, method(s) and analysis
- Dedicate a section to assess potential risks, limitations and challenges
- Present a time schedule and design, clarify project members' functions and competencies
- Motivate your costs in detail





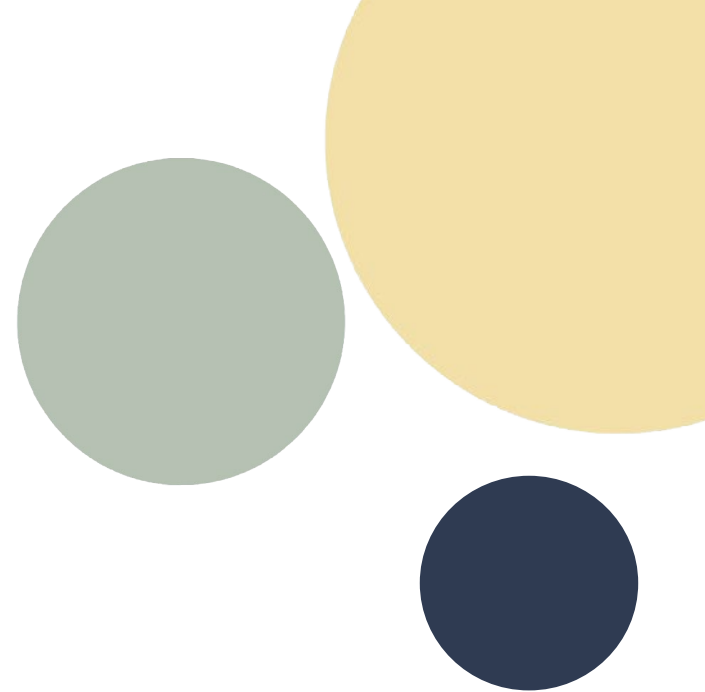
# Expected approval rate

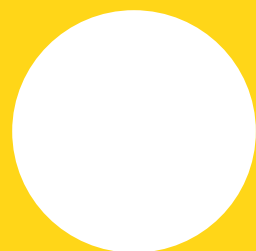
- Research projects - expected: ca. 12 %
- Smaller grants: varies depending on the number of applications
- **2025**: projects: 13%, postdocs: 12%



# Do you have questions?

- [www.ostersjostiftelsen.se](http://www.ostersjostiftelsen.se)
- Instructions for applications
- Q&A
- Tables - which funds may be applied for at the same time, what applies for ongoing projects
- Relevance to the Baltic Sea Region and Eastern Europe' with a list of countries concerned
- Email the secretariat
- See [Södertörn University's checklist](#) with internal procedures





**SÖDERTÖRN UNIVERSITY** | STOCKHOLM  
sh.se

# Information about internal rules and processes at Södertörn university

**Gabriela Voglio, Research advisor, Södertörn university**

Main message:

**Södertörn University must be the grant administrator for research projects and conferences.**

# What you need to do:

- Read Södertörns University's [checklist](#): *Checklist for research funding applications - Östersjöstiftelsen*
- If you don't know the name of the head of department and the head of school, you can find name and contact information at [sh.se](http://sh.se)
- If you know you will apply, take contact with head of department and head of school at Södertörn University.

## Academic schools at Södertörn University

SCHOOL OF HISTORICAL AND CONTEMPORARY STUDIES



SCHOOL OF CULTURE AND EDUCATION



SCHOOL OF SOCIAL SCIENCES



SCHOOL OF NATURAL SCIENCES, TECHNOLOGY AND ENVIRONMENTAL STUDIES



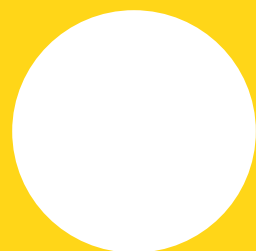
SCHOOL OF POLICE STUDIES



The university also offers a university-wide programme, Teacher Education, which reports to the vice-chancellor. Teacher Education is led by an academic leader and the programmes staffed by teaching staff from the academic schools.

# Note regarding employment

- Note 1: if you currently have an employment at another university, in Sweden or abroad, read thru the extra information below the checklist: *Additional information to applicants for funding from the Foundation for Baltic and East European Studies.*
- Note 2: if you are a project leader and will engage researchers employed outside Södertörns University, read thru the extra information below the checklist: *Additional information to applicants for funding from the Foundation for Baltic and East European Studies.*



**SÖDERTÖRN UNIVERSITY** | STOCKHOLM  
sh.se